



THE RETROFIT SOURCE
The Best Brands in Automotive Lighting

support@theretrofitsource.com
404.220.7940

INSTALLATION GUIDE:

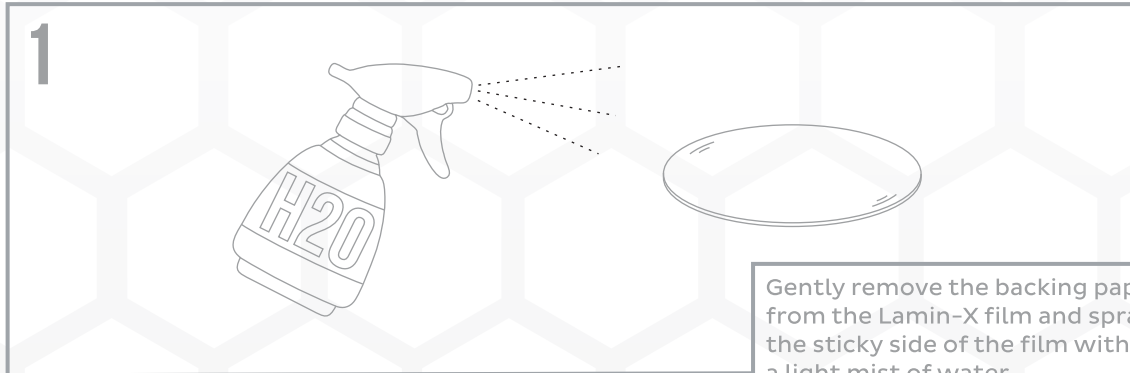
LAMIN-X PROTECTIVE FILM



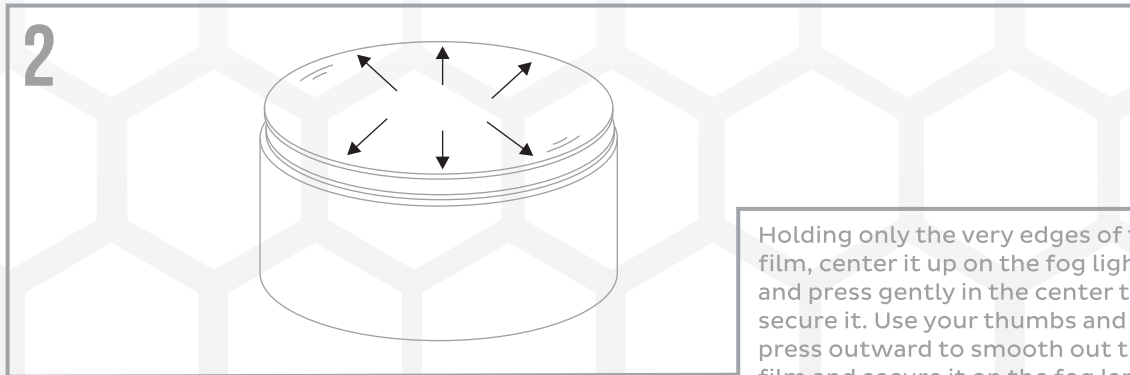


WARNING: By reading this document, I agree it is only to be used as an educational guide. The Retrofit Source makes no guarantee on any finished results, nor are they to be held responsible for any damage, misuse, or personal injuries. Use at your own risk. If you are unable to clearly understand and adapt the information below to your own application, professional installation is recommended.

INSTALLATION PROCEDURE



Gently remove the backing paper from the Lamin-X film and spray the sticky side of the film with a light mist of water.



Holding only the very edges of the film, center it up on the fog light and press gently in the center to secure it. Use your thumbs and press outward to smooth out the film and secure it on the fog lamp.



If necessary, use a blow dryer to heat the Lamin-X up slightly and press any lifting areas as needed.