

# 2015-2017 F150 HYBRID XB LED HEADLIGHTS INSTALL GUIDE

**WARNING:** By reading this document, you agree it is only to be used as an educational guide. Morimoto Lighting nor its dealers make guarantees on any finished results, nor are they to be held responsible for any damage, misuse, or personal injuries. If you are unable to clearly understand and adapt the information below, professional installation is recommended.

## PACKAGE CONTENTS



2X HEADLIGHT ASSEMBLIES



1 X FUSE TAP / DRL HARNESS

**IMPORTANT:** If your vehicle is equipped with anything but OEM turn signals (full assemblies, LED bulbs, or otherwise) in the tail lights or elsewhere: You may experience a hyper flash and/or problem with the sequential signal setting on these headlights. This is not a defect in the headlight, and caused by un-matched impedance with your original vehicle settings.

# 2015-2017 FORD F150

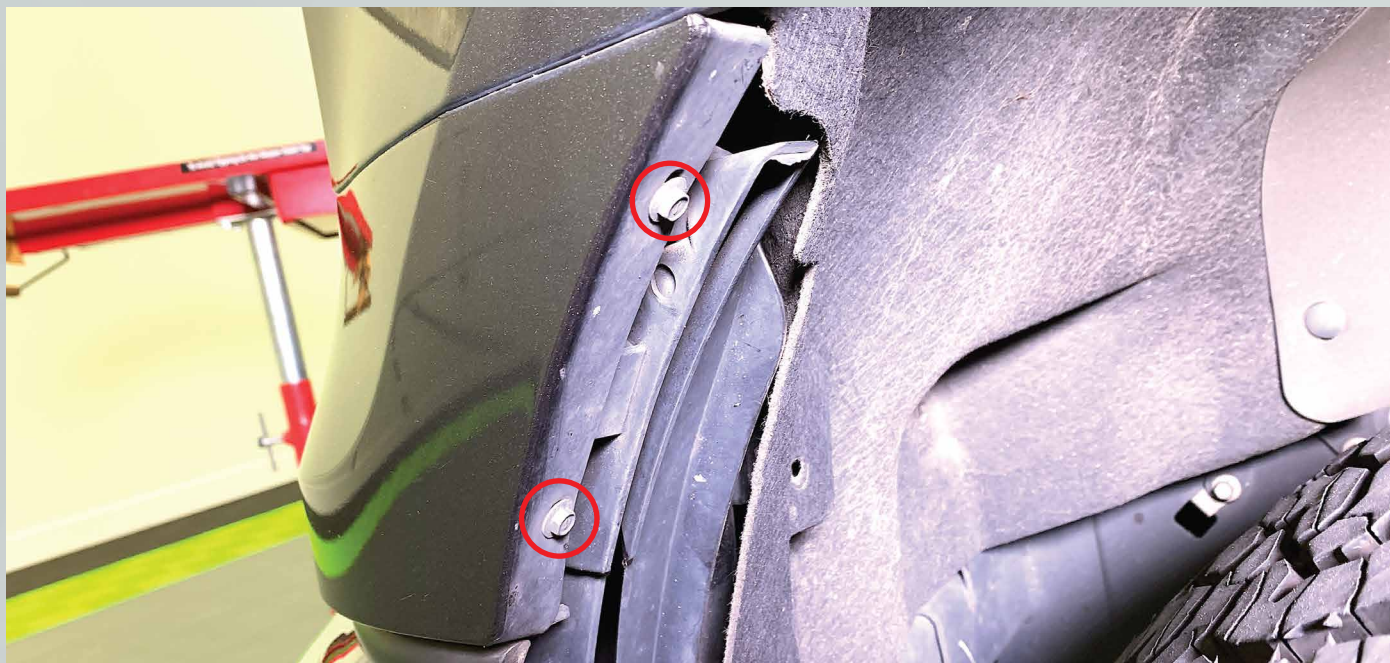


## REQUIRED TOOLS

- RATCHET
- 7MM SOCKET
- 8MM SOCKET
- 10MM SOCKET
- T25 TORX BIT
- PICK TOOL
- FLAT HEAD SCREWDRIVER OR TRIM REMOVAL TOOL
- PHILIPS HEAD SCREWDRIVER
- NEEDLE NOSE PLIERS

# INSTALLATION PROCESS

1. Remove two (2) 7mm bolts on the fender liner side of the headlight trim piece.



2. Remove one (1) plastic clip from the top of the headlight trim piece. Do this put prying up on the top part of the clip then pry the bottom part up and out of the hole.



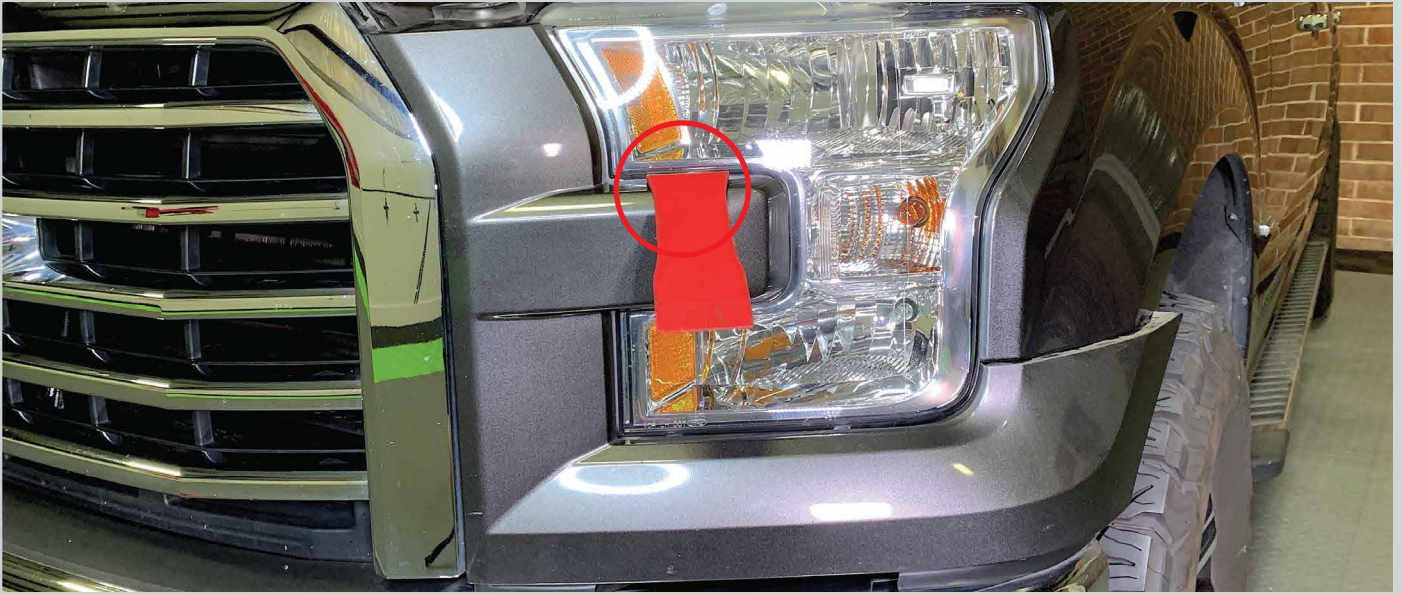
3. With your hand pull on the edge to release the headlight trim piece from the fender.



4. Pry the center section of the headlight trim piece away from the headlight.



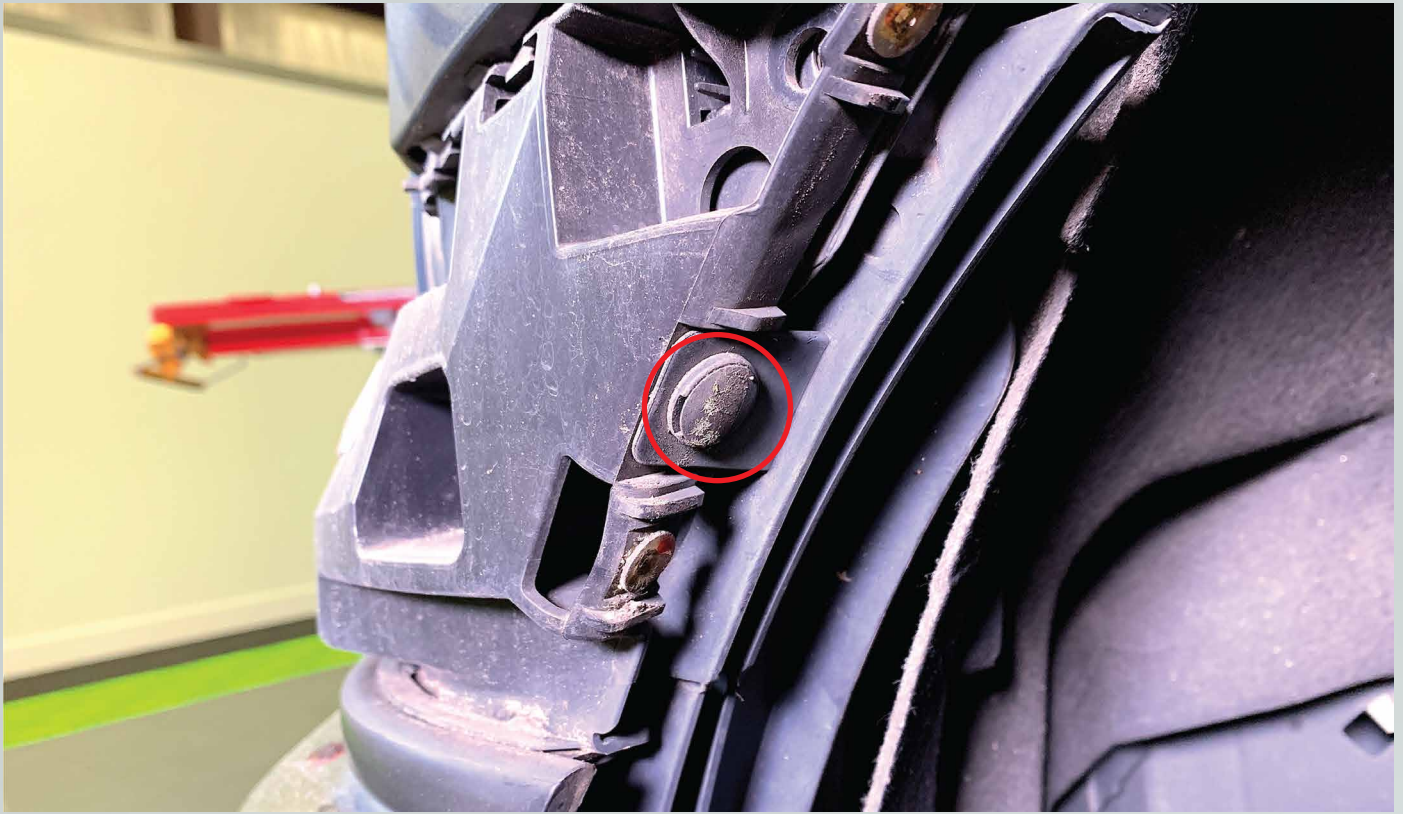
5. Pry out the center section of the headlight trim piece away from the headlight and remove it off the truck.



6. Remove one (1) 8mm bolt (blue circle). Remove six (6) 10mm bolts (red circles) from the plastic piece.



7. Remove the push clip from the side of the plastic piece.



8. With a flat head screwdriver pry the air duct down, away from the plastic bracket.



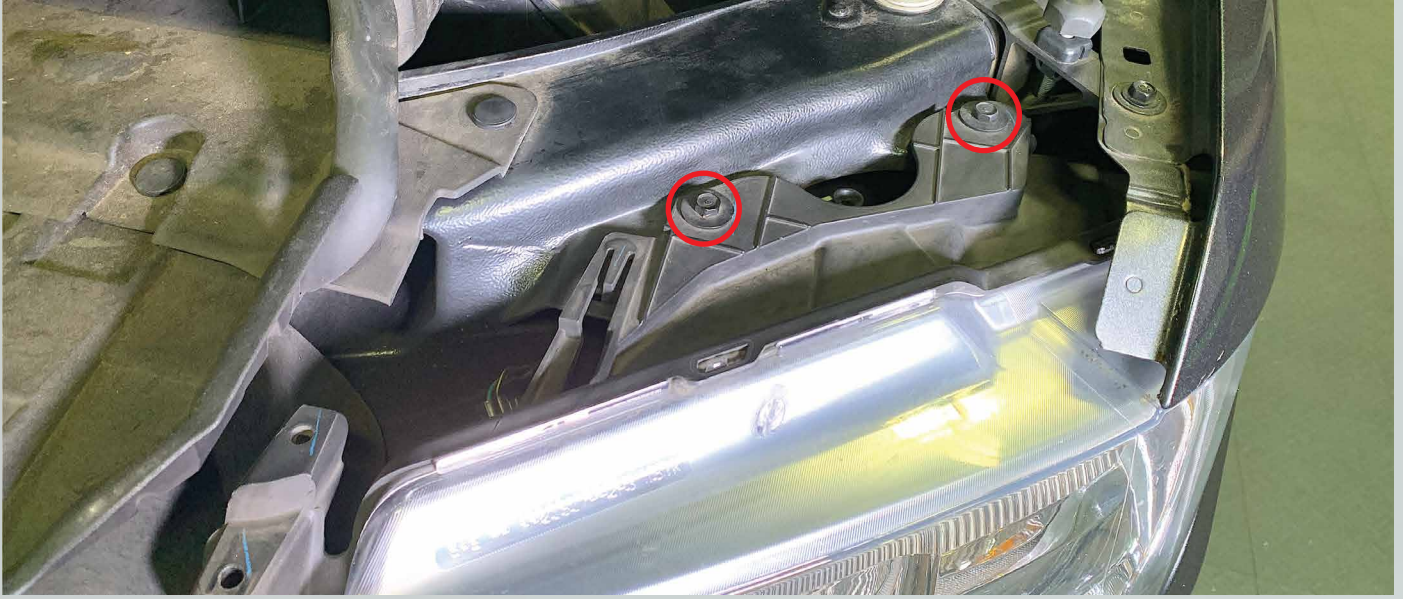
9. With a pair of needle nose pliers push down the two prongs and slide the plastic bracket off of the truck.



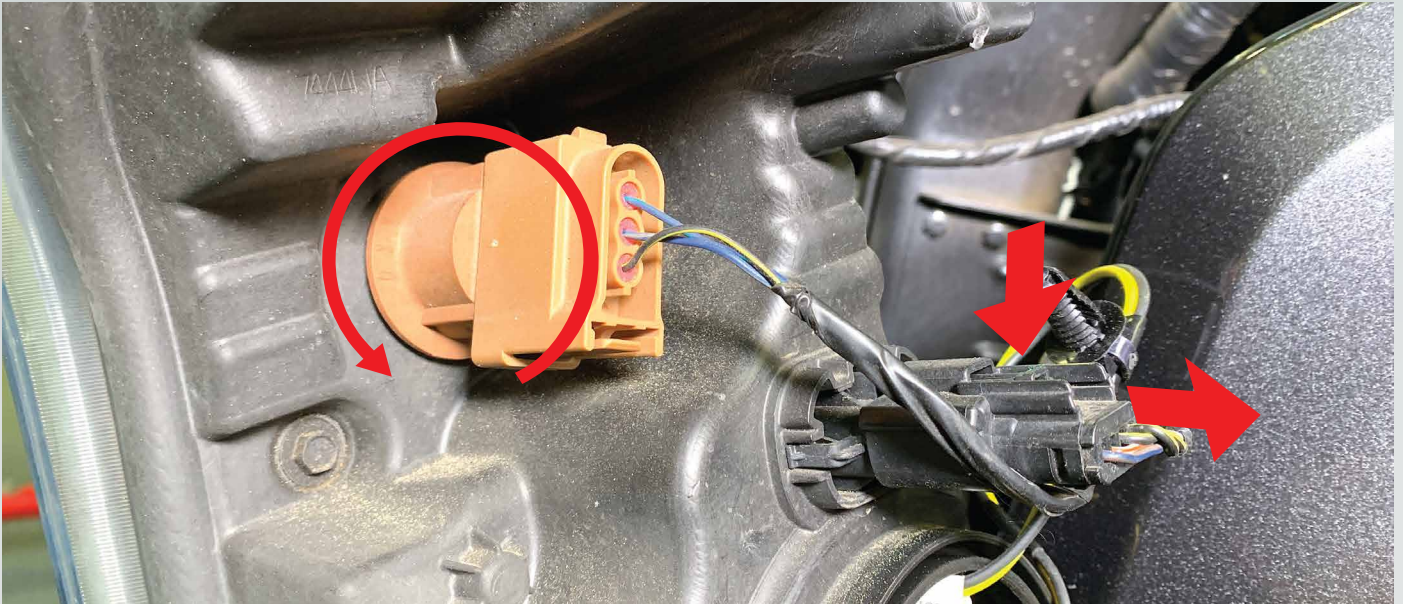
10. Remove one (1) 10mm bolt from the side of the headlight (between the headlight and grille) .



11. Remove two (2) 10mm bolts from the top of the headlight. Then pull the headlight forward to release it from the truck.

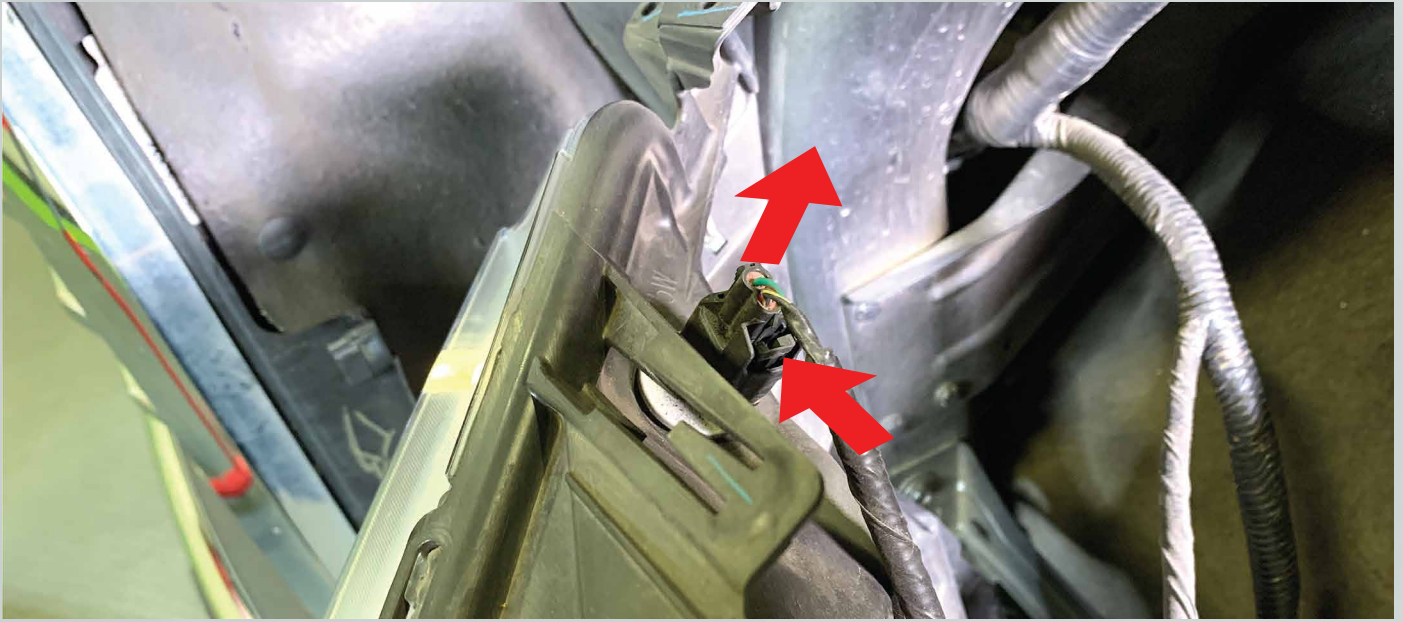


12. Turn the orange socket counter clockwise and pull it out. To disconnect the black connector press the release tab and slide the connector off.





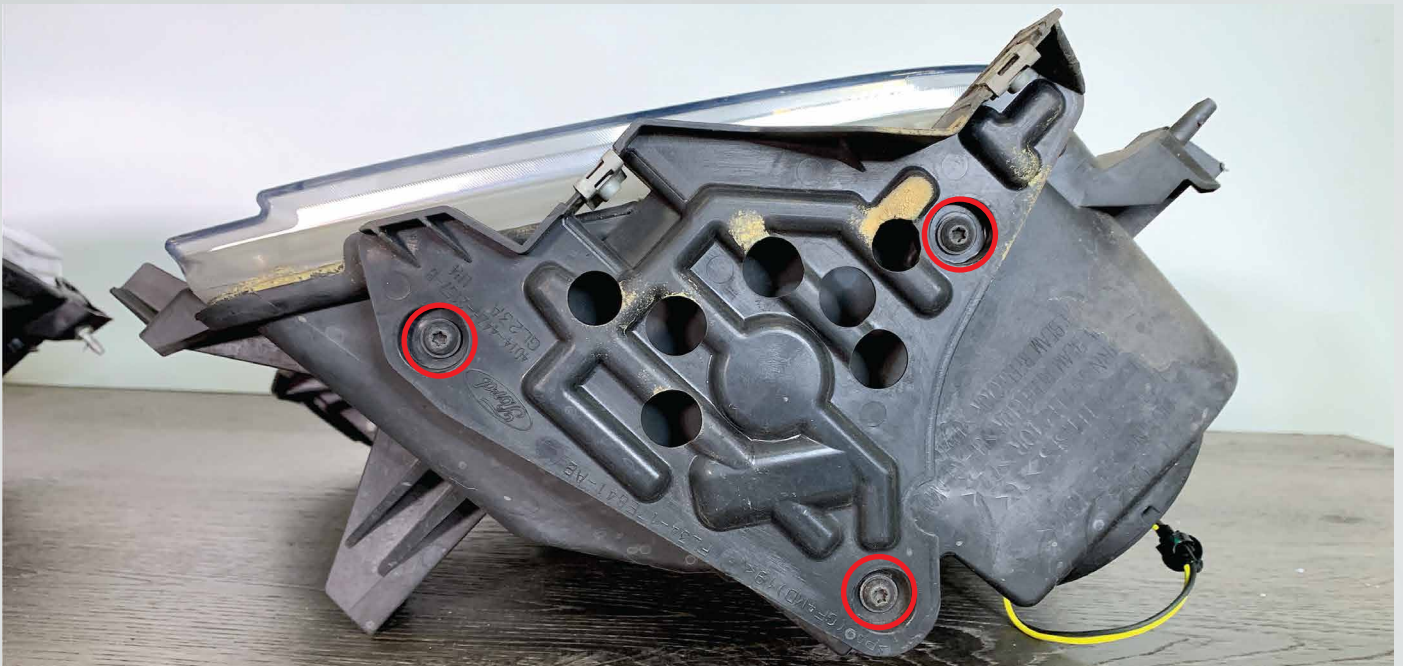
13. Disconnect the black connector by pressing the release tab and sliding the connector off.



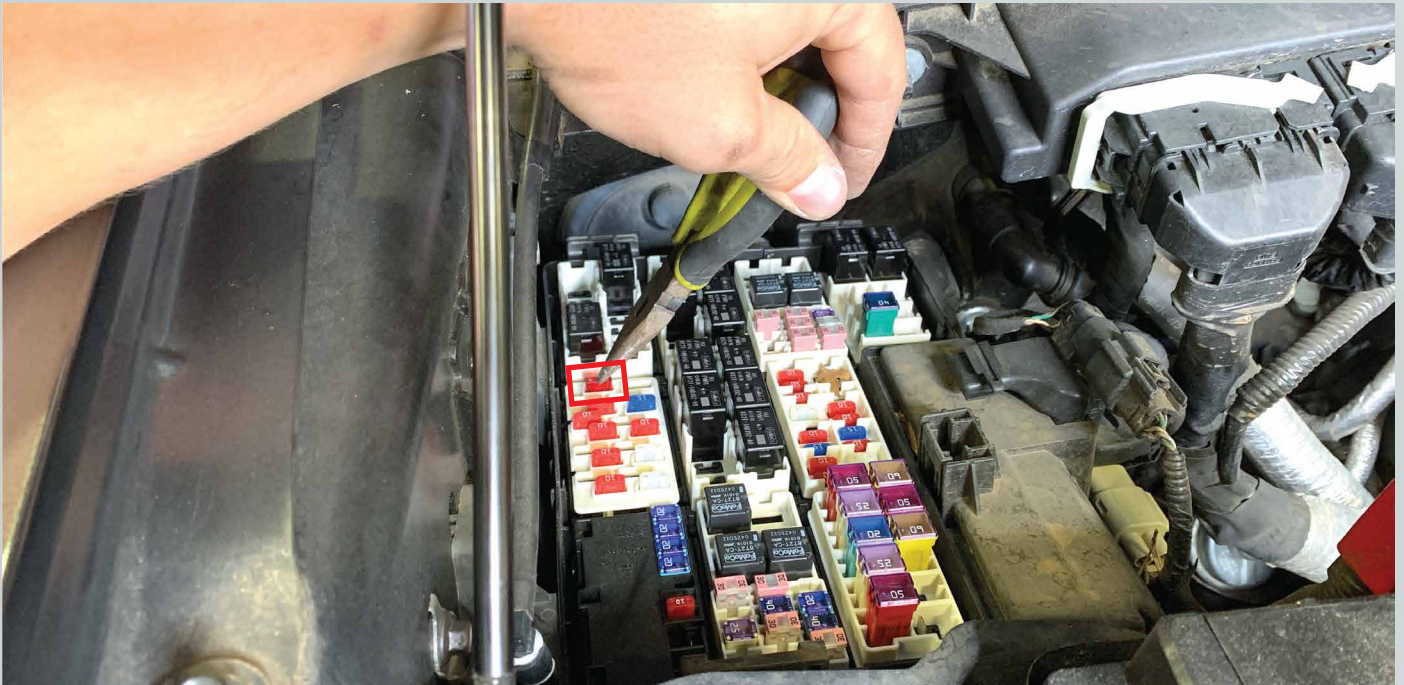
14. Remove the headlight off the truck.

15. Repeat steps 1-14 on the other side of the truck

16. Remove three (3) T25 torx bolts and remove the bracket off the bottom of the headlight and transfer it to the xb headlight. Repeat on the other headlight.



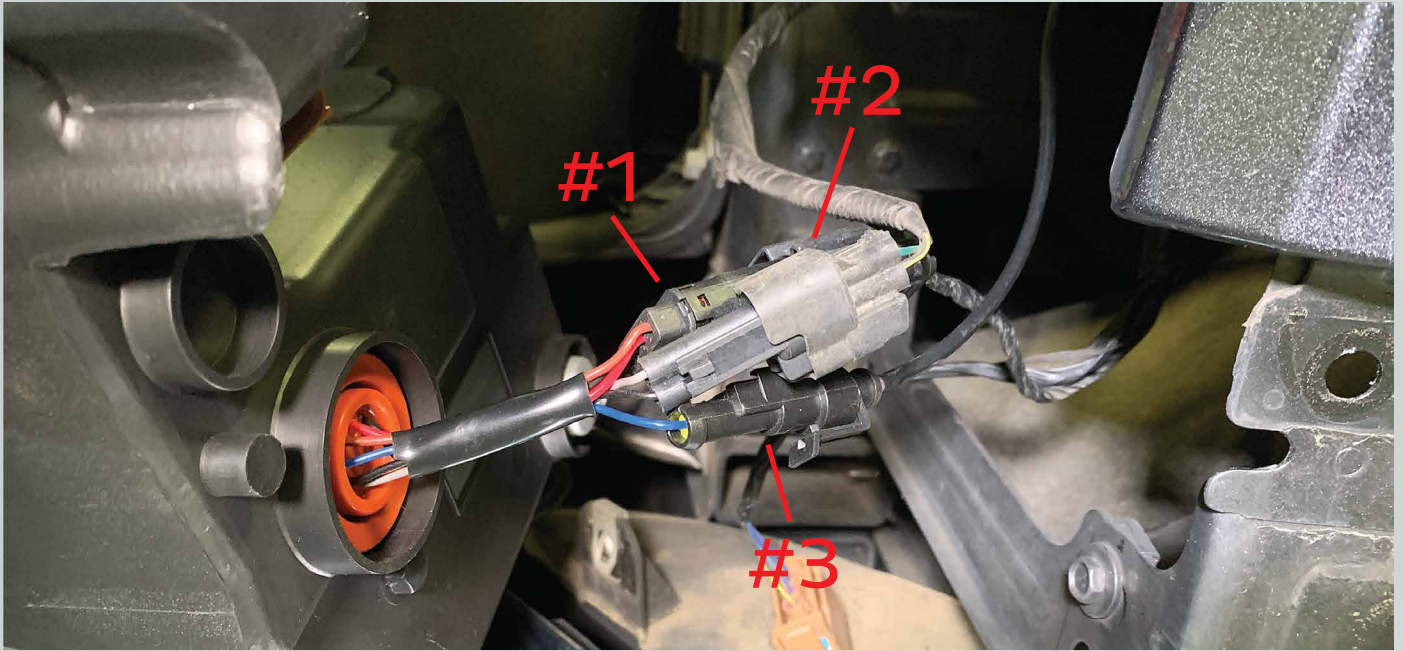
17. Locate your under hood fuse box on the passenger side of the truck, and remove fuse #113.



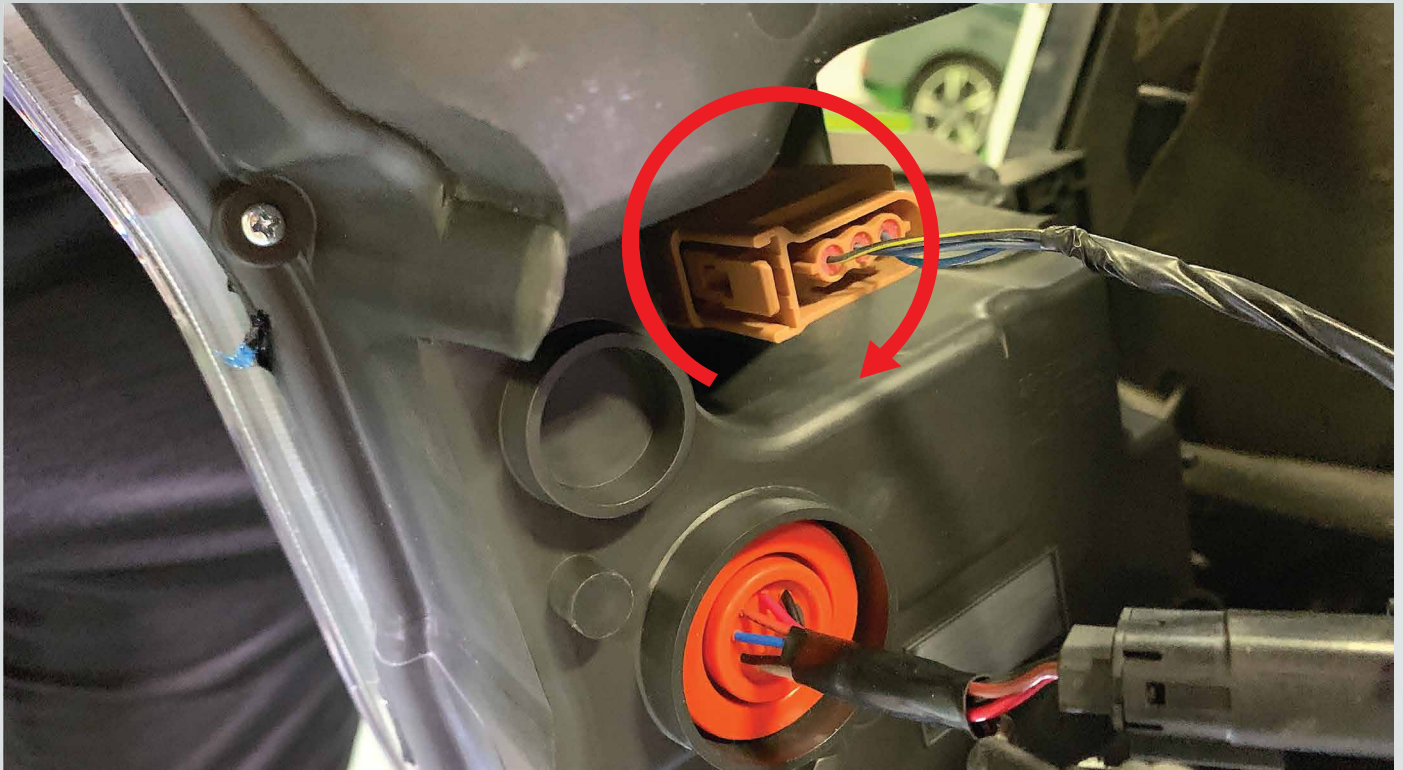
18. Locate your supplied DRL fuse tap harness and plug it in the fuse box to replace the fuse from above. Then run the shorter side of the harness to the passenger side and the longer side to the driver side and secure the harness to the truck.



19. Place one of the headlights on the truck and connect these 3 connectors.



20. Locate the center hole for the turn signal socket, align the tabs on the socket, slide it in and turn clockwise.

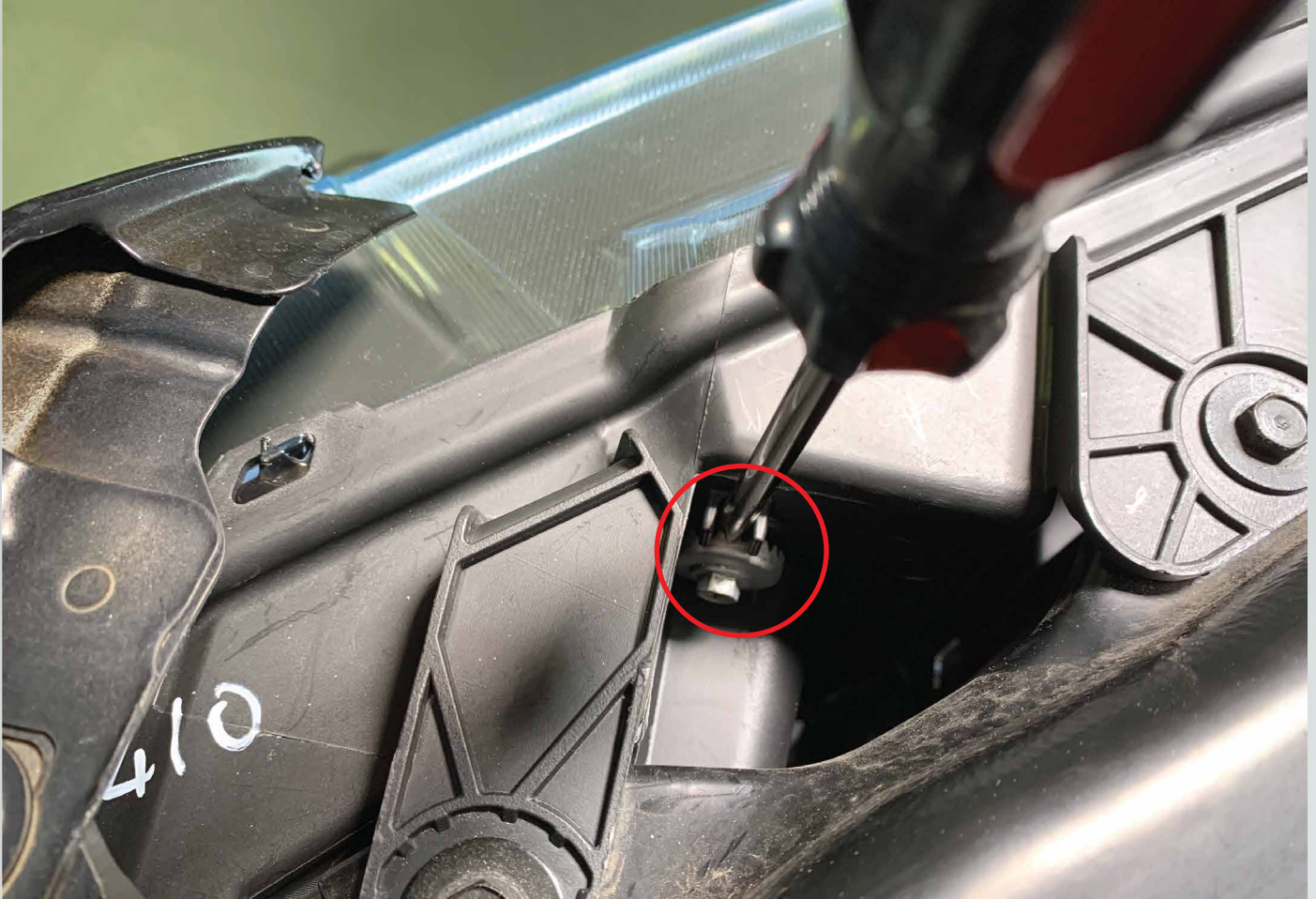


21. Repeat steps 19, 20 on the other side of the truck.

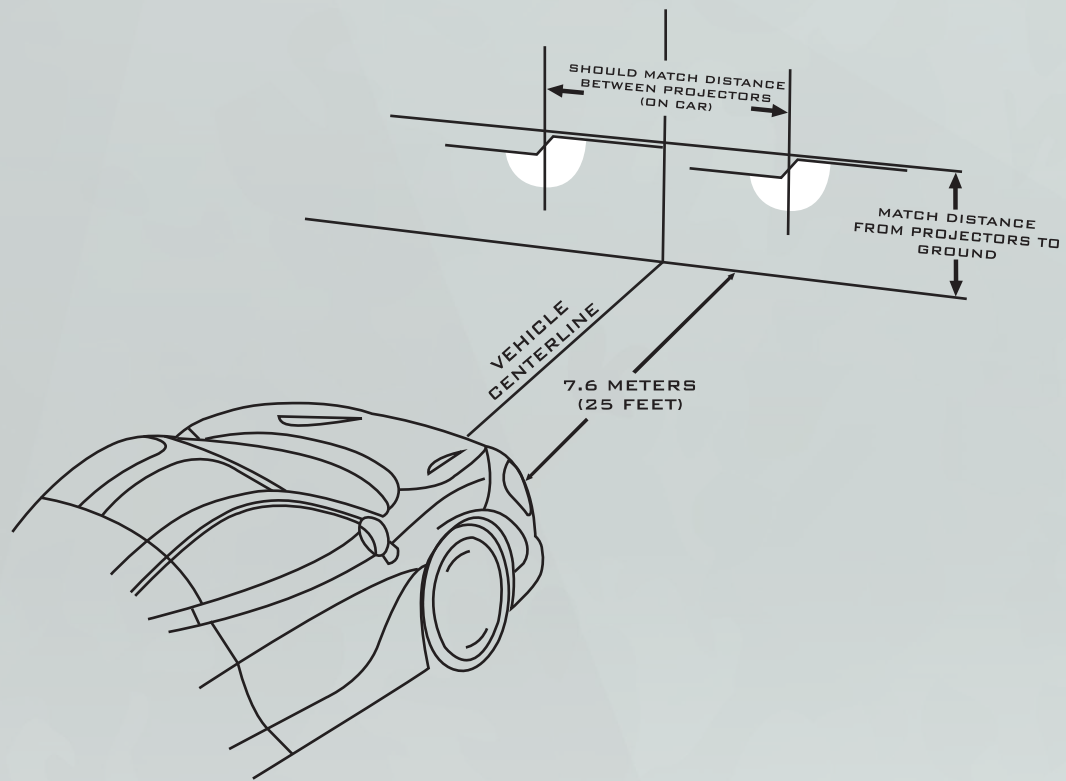
22. Turn the truck on and go through all of the functions to make sure everything works.

22. Reassemble the truck in the reverse order that you took it apart.

23. To adjust the low beam, slide a philips head screwdriver into this slot and turn the screwdriver to the right to move the beam up and turn to the left to move the beam down.



- Please refer to the aiming standards below when adjusting your headlight beam.



**ENJOY YOUR NEW MORIMOTO XB HEADLIGHTS!**