



THE AUTOMOTIVE LIGHTING BENCHMARK

INSTALL GUIDE

DITCH LIGHT BRACKETS: BRONCO SPORT (21+)

BAF077

WHAT'S INCLUDED



2X (PAIR) DITCH
LIGHT BRACKETS



2X WIRE CLIPS

REQUIRED TOOLS

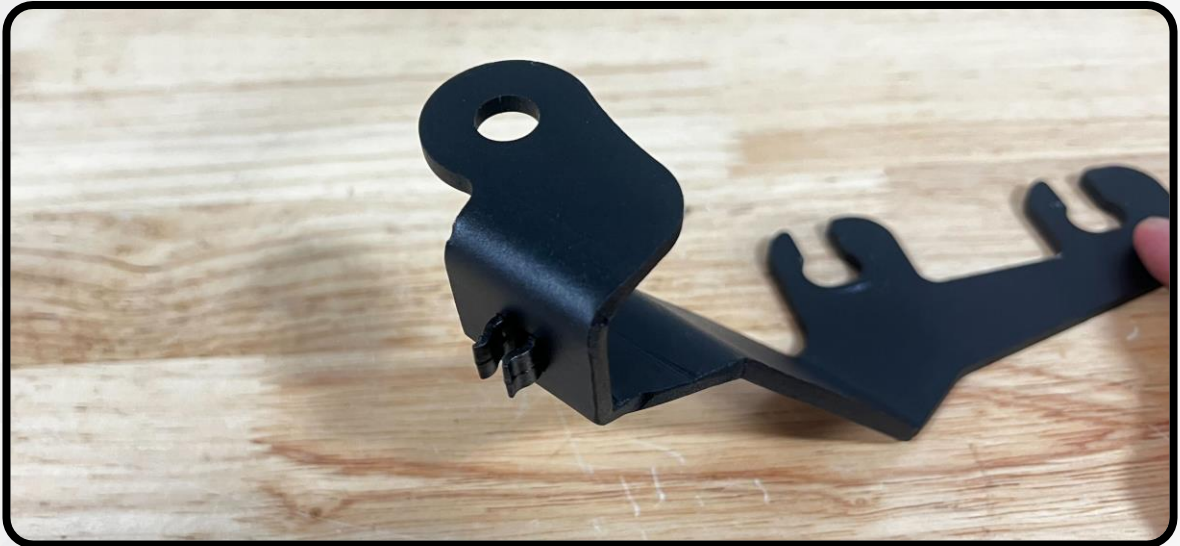
- RACHET
- 13MM SOCKET
- ZIP TIES
- 17MM WRENCH
- T30 TORX BIT
- PAINTER'S TAPE
- MARKER

WARNING: IT IS THE INSTALLERS RESPONSIBILITY TO CONFIRM COMPLIANCE WITH STATE AND LOCAL LAWS. BY READING THIS DOCUMENT, YOU AGREE IT IS ONLY TO BE USED AS AN EDUCATIONAL GUIDE. MORIMOTO LIGHTING NOR ITS DEALERS MAKE GUARANTEES ON ANY FINISHED RESULTS, NOR ARE THEY TO BE HELD RESPONSIBLE FOR ANY DAMAGE, MISUSE, OR PERSONAL INJURIES. IF YOU ARE UNABLE TO CLEARLY UNDERSTAND AND ADAPT THE INFORMATION BELOW, PROFESSIONAL INSTALLATION IS RECOMMENDED.

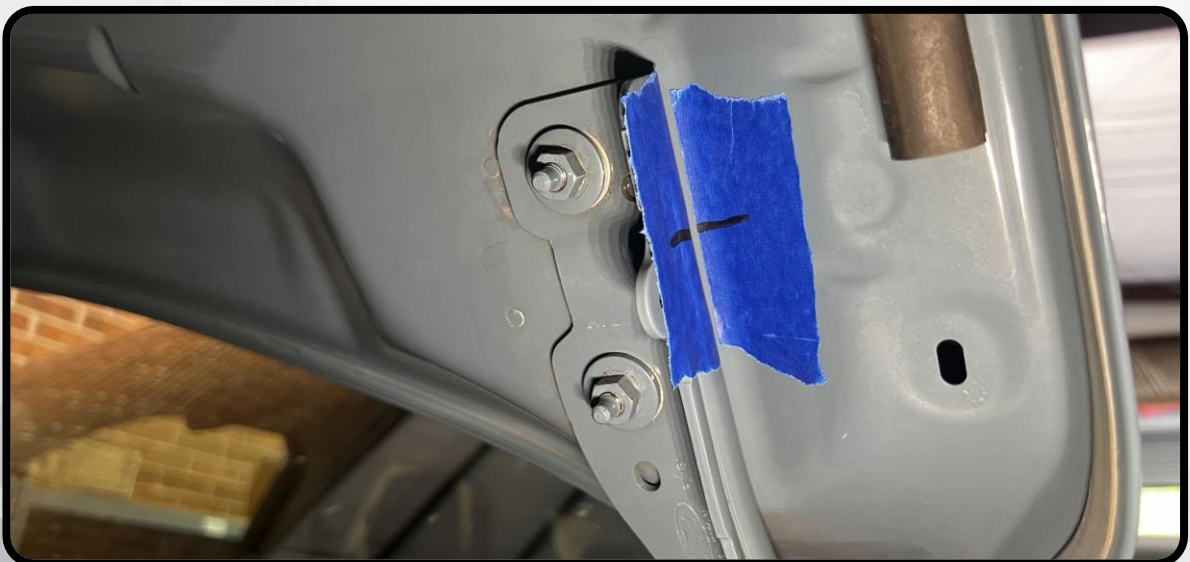


INSTALLATION

1. BEGIN BY INSERTING ONE OF THE PLASTIC WIRE CLIPS INTO THE SQUARE SLOT ON EACH BRACKET, AS SHOWN BELOW



2. MOVING TO THE VEHICLE, RAISE THE HOOD AND LOCATE THE HOOD HINGE
3. APPLY A STRIP OF PAINTER'S TAPE TO THE HOOD ALONG SIDE THE HOOD HINGE , AND A SECOND STRIP NEXT TO IT ON THE HOOD HINGE ITSELF
4. DRAW A STRAIGHT LINE ON THE TAPE ACROSS THE SEAM BETWEEN THE HINGE AND THE HOOD ITSELF. THIS WILL BE USED TO ENSURE THE HOOD REMAINS IN ITS ORIGINAL POSITION AFTER THE INSTALL
5. REPEAT THIS PROCESS ON THE HINGE ON THE OPPOSITE SIDE



INSTALLATION

6. LOOSEN THE UPPER 13MM NUT THAT SECURES THE HOOD TO THE HINGE UNTIL YOU HAVE ENOUGH SPACE TO SLIDE THE BACKET IN BETWEEN THE HINGE AND THE NUT/WASHER



7. SLIDE THE BRACKET BETWEEN THE HINGE AND TOP NUT/WASHER, AND RETIGHTEN THE NUT UNTIL BARELY SNUG AGAINST THE BRACKET



INSTALLATION

8. LOOSEN THE LOWER HOOD HINGE NUT AND ROTATE THE BRACKET TO SLOT BETWEEN THE LOWER NUT AND THE HOOD HINGE. CONFIRM THAT THE HOOD IS PROPERLY ALIGNED, AND RETIGHTEN BOTH NUTS



9. TO INSTALL YOUR POD LIGHTS, CLOSE THE HOOD AND PLACE THE U-BRACKET ON THE DITCH LIGHT BRACKET. SECURE IT TO THE BRACKET USING THE CARRIAGE BOLT AND 17MM NUT. HOLD THE TOP OF THE BOLT DOWN WITH YOUR HAND AND TIGHTEN THE NUT WITH A 17MM WRENCH. LEAVE IT SLIGHTLY LOOSE SO THAT THE POD CAN BE AIMED LATER



INSTALLATION

10. SECURE THE POD TO THE U-BRACKET WITH THE TWO PROVIDED SCREWS USING A T30 TORX BIT. LEAVE THESE SLIGHTLY LOOSE AS WELL TO ALLOW AIMING LATER



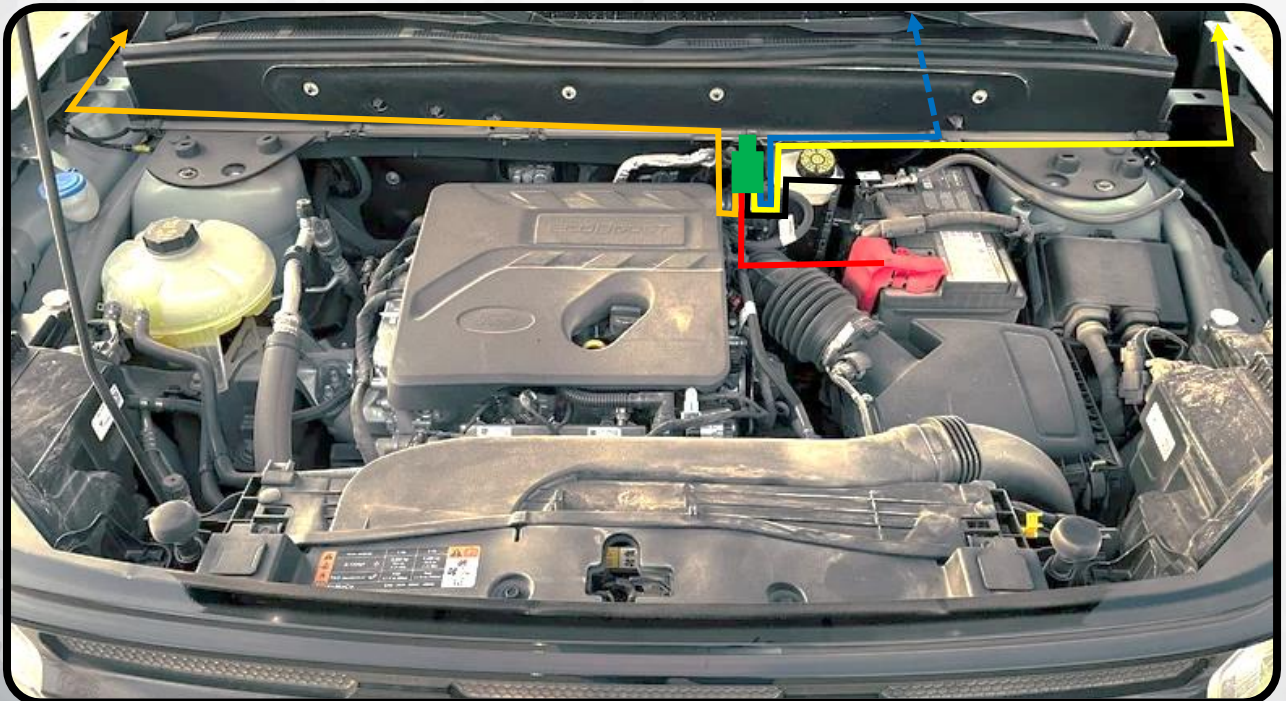
11. REPEAT STEPS 6-10 ON THE OPPOSITE SIDE OF THE VEHICLE



INSTALLATION

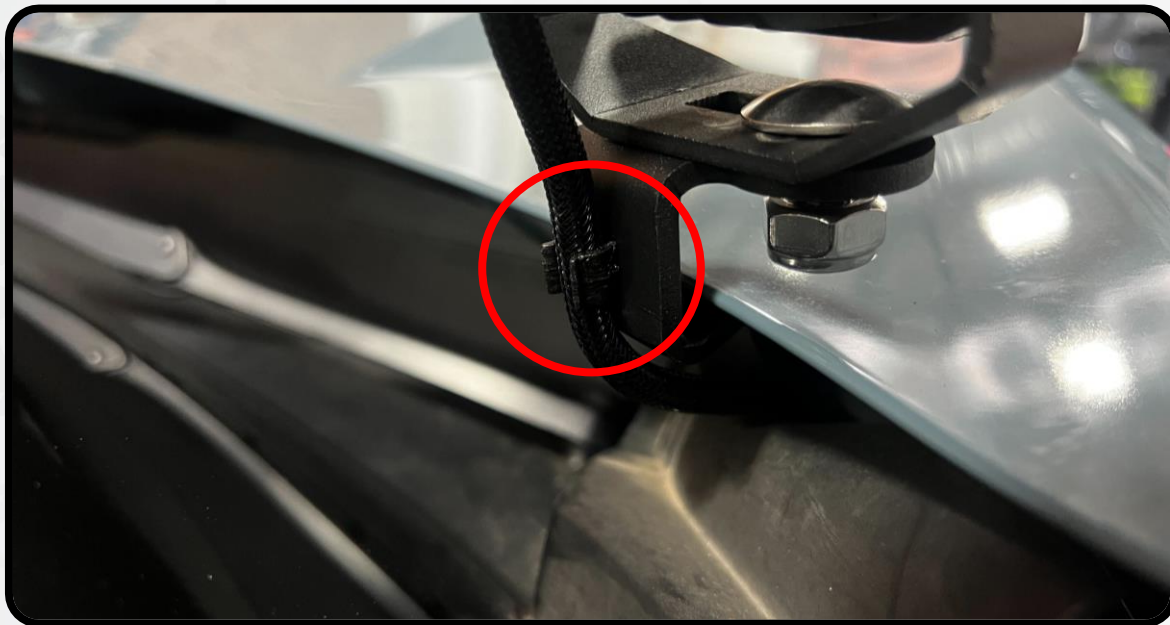
12. INSTALL YOUR RELAY POWER HARNESS USING THE FIGURE BELOW AS A GUIDE
 - A. MOUNT YOUR RELAY UPRIGHT NEAR THE VEHICLE'S BATTERY (GREEN IN FIGURE)
 - B. CONNECT THE RED RING TERMINAL LABELED "BATTERY +" TO THE POSITIVE TERMINAL ON THE BATTERY (RED IN FIGURE)
 - C. CONNECT THE BLACK RING TERMINAL LABELED "GROUND -" TO A SUTABLE BARE-METAL GROUND, OR THE NEGATIVE TERMINAL ON THE BATTERY (BLACK IN FIGURE)
 - D. ROUTE THE "LIGHT 1" CONNECTOR UP TO THE NEAREST POD LIGHT (ORANGE IN FIGURE)
 - E. ROUTE THE "LIGHT 2" CONNECTOR ACROSS THE BAY TO THE OPPOSITE POD LIGHT. THE EXTENSIONS INCLUDED WITH YOUR HARNESS MAY BE REQUIRED (YELLOW IN FIGURE)
 - F. THE "SWITCH" WIRE (BLUE IN FIGURE) CAN BE USED TO ACITVATE THE PODS IN ONE OF TWO WAYS:
 - 1) TO TAP INTO AN EXISTING SWITCH PANEL/CONTROLLER: REMOVE THE PUSH BUTTON AND ATTACH THE BARE WIRE INPUT ADAPTER ON THE INPUT HARNESS TO CONNECT TO YOUR DESIRED TRIGGER
 - 2) TO USE THE INCLUDED PUSH-BUTTON: ROUTE THE HARNESS ACROSS THE ENGINE BAY TO THE DRIVER SIDE OF THE VEHICLE. LOCATE A SUTABLE GROMMET ON THE FIREWALL TO PASS THROUGH TO THE INTERIOR FOOTWELL. DISCONNECT THE SWITCH AND PASS THE HARNESS THROUGH THE GROMMET AND INTO THE INTERIOR. DRILL A $\frac{3}{4}$ " HOLE IN YOUR DASH IN YOUR DESIRED LOCATION. MOUNT THE SWITCH AND RECONNECT IT TO THE HARNESS YOU ROUTED INTO THE FOOTWELL

ONCE ALL OF YOUR WIRES ARE ROUTED, BE SURE ALL WIRES ARE SECURED AND OUT OF THE WAY OF ANYTHING THAT MOVES OR GENERATES EXCESSIVE HEAT IN THE ENGINE BAY SUCH AS FANS, BELTS, WIPER ARMS, OR EXHAUST COMPONENTS



INSTALLATION

13. REOPEN THE HOOD AND PLUG YOUR POWER HARNESS INTO THE LIGHT. ROUTE YOUR WIRING ALONG THE BRACKET BY CLIPPING THE WIRE INTO THE WIRE CLIP ON THE BRACKET



14. ONCE THE PODS ARE WIRED UP, POWER THEM ON, AND DECIDE HOW YOU'D LIKE TO AIM THEM. ONCE YOU SETTLE ON YOUR PREFERRED AIM, TIGHTEN THE TWO T30 TORX SCREWS AND THE 17MM NUT DOWN IN THE DESIRED POSITION



- ENJOY YOUR NEW DITCH LIGHTS! -

