



THE AUTOMOTIVE LIGHTING BENCHMARK

INSTALL GUIDE

SUPER7 JL/JT HALO INSTALL GUIDE

LF749



WARNING: IT IS THE INSTALLER'S RESPONSIBILITY TO CONFIRM COMPLIANCE WITH STATE AND LOCAL LAWS. BY READING THIS DOCUMENT, YOU AGREE IT IS ONLY TO BE USED AS AN EDUCATIONAL GUIDE. MORIMOTO LIGHTING NOR ITS DEALERS MAKE GUARANTEES ON ANY FINISHED RESULTS, NOR ARE THEY TO BE HELD RESPONSIBLE FOR ANY DAMAGE, MISUSE, OR PERSONAL INJURIES. IF YOU ARE UNABLE TO CLEARLY UNDERSTAND AND ADAPT THE INFORMATION BELOW, PROFESSIONAL INSTALLATION IS RECOMMENDED.

IMPORTANT: IF YOUR VEHICLE IS EQUIPPED WITH ANYTHING BUT MORIMOTO OR OEM TAILLIGHTS, SIDE MARKERS OR OTHER OEM EXTERIOR LIGHTING; YOU MAY EXPERIENCE A HYPER FLASH AND/OR PROBLEM WITH THE SEQUENTIAL SIGNAL SETTING ON THESE HEADLIGHTS. THIS IS NOT A DEFECT IN THE HEADLIGHT AND CAUSED BY UN-MATCHED IMPEDANCE WITH YOUR ORIGINAL VEHICLE SETTINGS.



SUPER7 JL/JT HALO INSTALL GUIDE

TABLE OF CONTENTS	PAGE
HALO INSTALLATION -----	3
VEHICLE INSTALLATION -----	7

WHAT'S INCLUDED



8X HALO CLIPS AND SCREWS



XBT CONTROLLER



FUSE TAP HARNESS



2X LED HALOS



2X POWER HARNESSES



2X LED DRIVERS

REQUIRED TOOLS

- PHILLIPS HEAD SCREWDRIVER
- T10 SCREWDRIVER
- 10MM SOCKET
- RATCHET
- TRIM REMOVAL TOOL



SUPER7 JL/JT HALO INSTALL GUIDE

1. BEGIN BY REMOVING THE SUPER7 FROM THE JL/JT BUCKET ADAPTER. TO DO THIS, REMOVE THE FOUR PHILLIPS HEAD SCREWS AROUND THE PERIMETER OF THE ASSEMBLY THAT SECURE THE FRONT TRIM BEZEL, AND REMOVE THE BEZEL

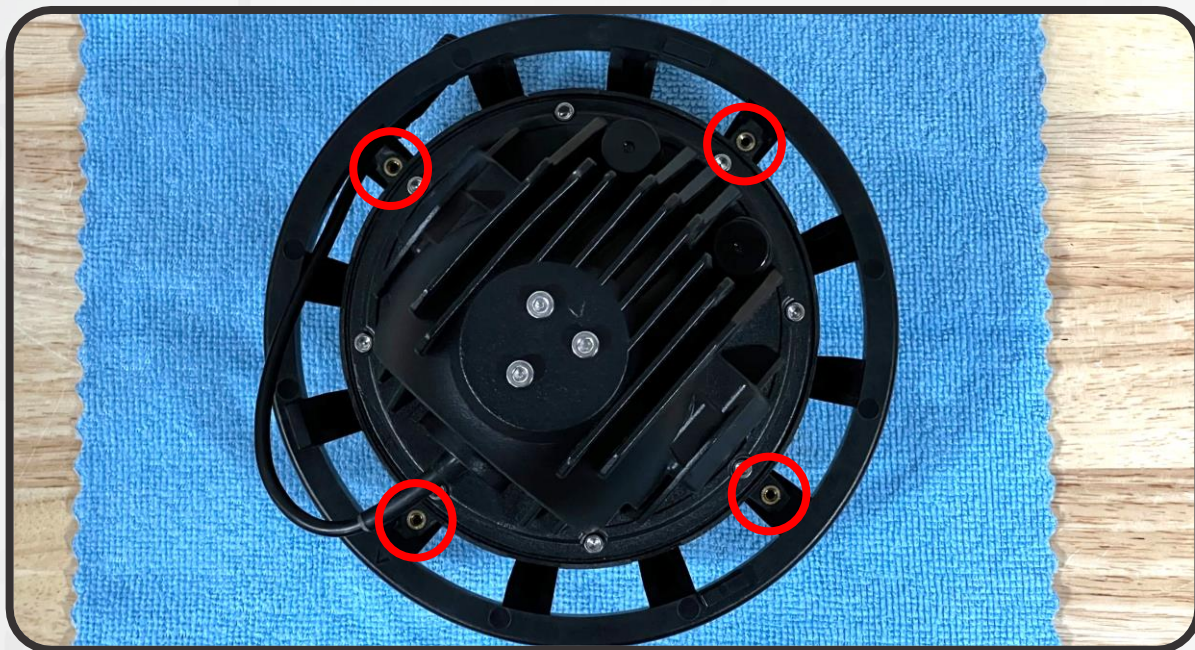


2. WITH THE BEZEL REMOVED, REMOVE THE THREE PHILLIPS HEAD SCREWS SECURING THE MOUNTING RING TO THE HOUSING. REMOVE THE RING, AND THEN REMOVE THE SUPER7 PROJECTOR ASSEMBLY AS WELL



SUPER7 JL/JT HALO INSTALL GUIDE

3. PLACE THE SUPER7 ASSEMBLY ON YOUR WORK BENCH FACE DOWN ON TOP OF A TOWEL OR WORK MAT TO PREVENT SCRATCHING THE LENS. LOCATE THE 4 THREADED INSERTS ON THE BACK OF THE HOUSING



4. USING THE PROVIDED T10 SCREWS, INSTALL THE HALO CLIPS INTO EACH OF THE INSERTS AS SHOWN BELOW



SUPER7 JL/JT HALO INSTALL GUIDE

5. PLACE THE HALO ON THE BACK OF THE ASSEMBLY, AND SNAP IT DOWN INTO PLACE



SUPER7 JL/JT HALO INSTALL GUIDE

- REINSTALL THE SUPER7 PROJECTOR INTO THE HEADLIGHT ASSEMBLY IN THE REVERSE ORDER YOU DISASSEMBLED IT. MAKE SURE TO ALIGN THE "UP" ARROW ON THE BACK OF THE SUPER 7 PROJECTOR WITH THE "UP" ARROW ON THE HEADLIGHT ASSEMBLY

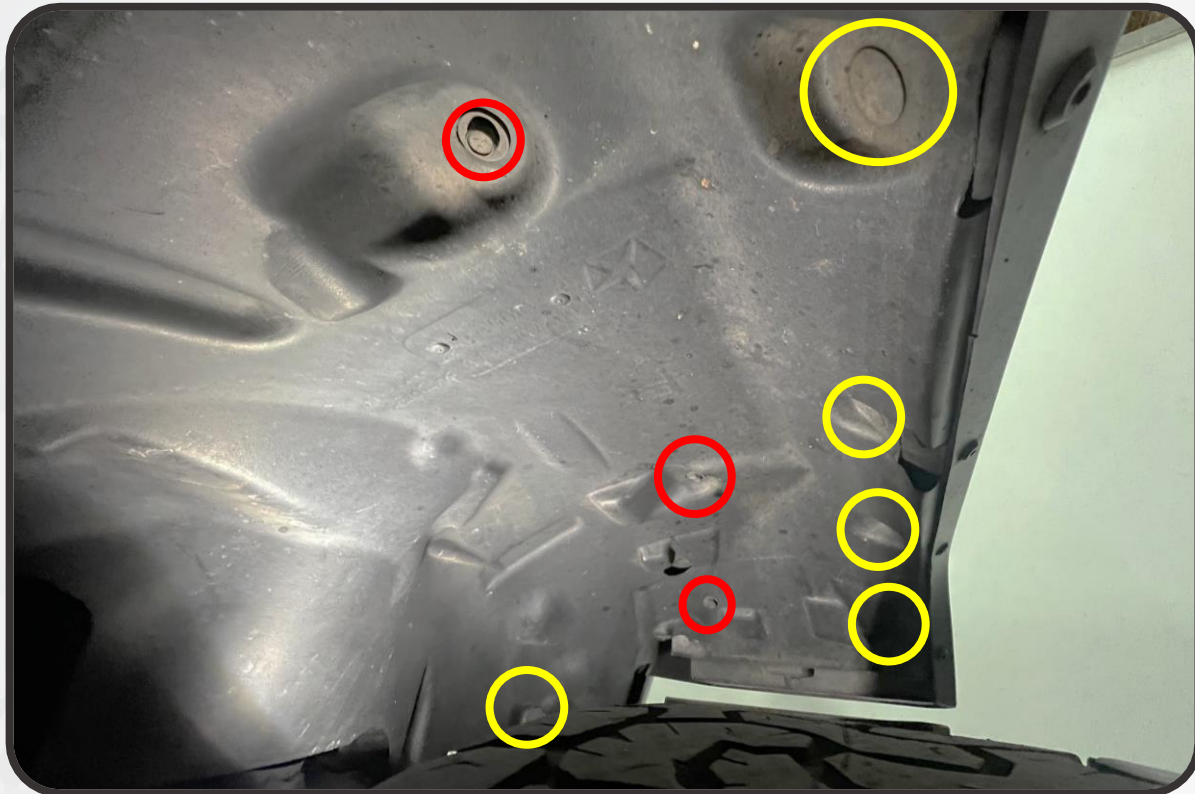


- REPEAT STEPS 1-6 ON THE OTHER SUPER7 HEADLIGHT

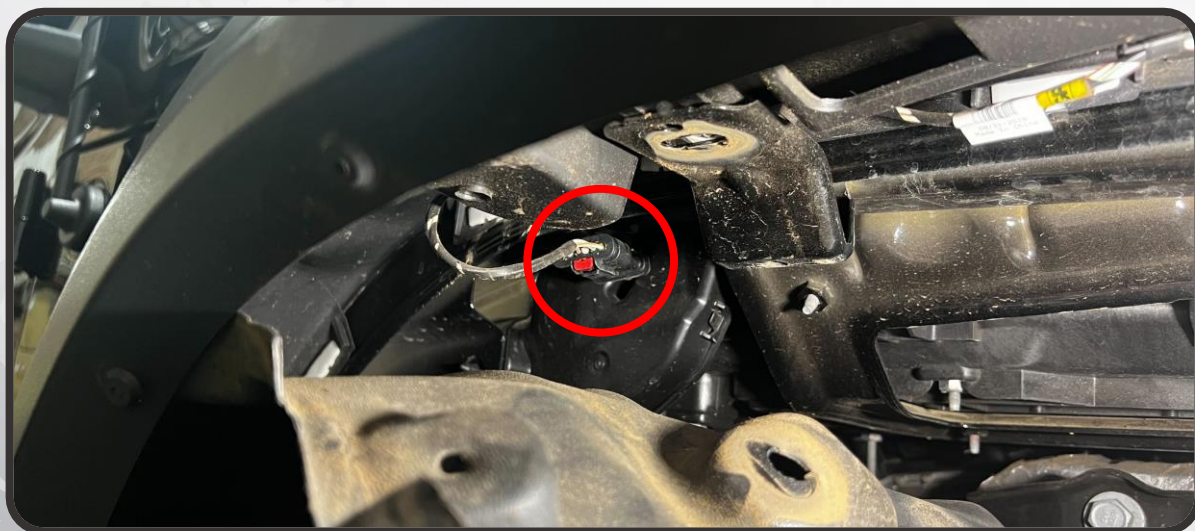


SUPER7 JL/JT HALO INSTALL GUIDE

- MOVING TO THE PASSENGER SIDE WHEEL WELL OF THE VEHICLE, REMOVE THE THREE 10MM BOLTS (RED) AND FIVE PUSH CLIPS (YELLOW) FROM THE FENDER LINER, AND PULL THE LINER DOWN OUT OF THE WAY



- LOCATE THE MAIN FENDER LIGHT CONNECTOR LOCATED BEHIND THE FENDER LINER AND DISCONNECT IT

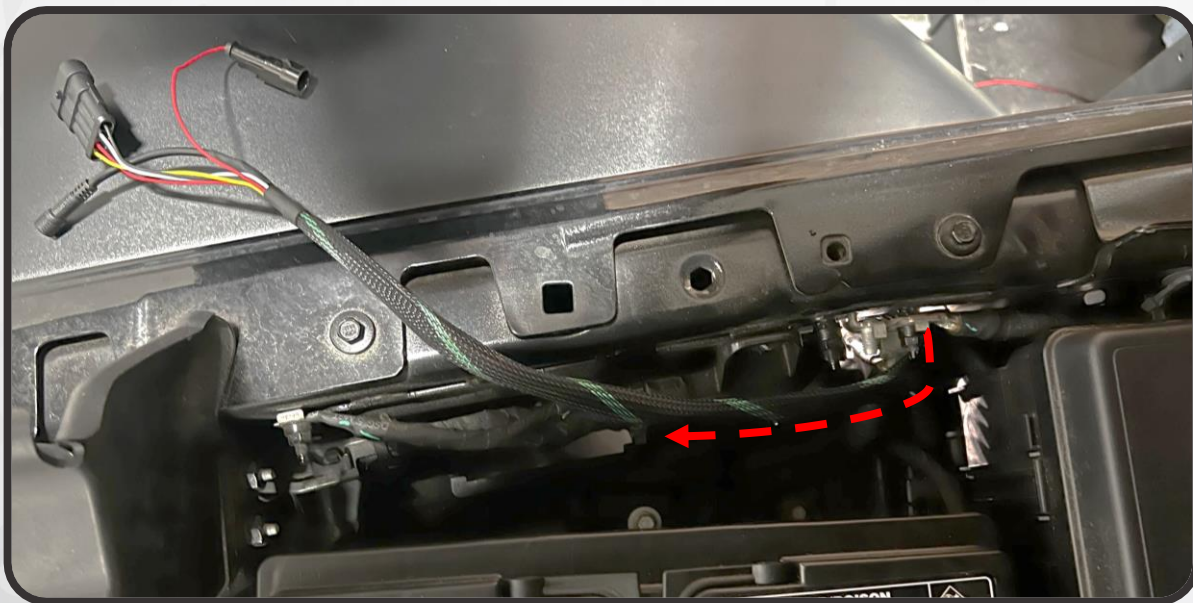


SUPER7 JL/JT HALO INSTALL GUIDE

10. TAKE THE POWER HARNESS WITH THE RED FUSE TAP INPUT AND CONNECT THE SHORTER PORTION IN-LINE WITH THE MAIN FENDER LIGHT HARNESS YOU DISCONNECTED



11. ROUTE THE LONGER PORTION OF THE HARNESS THROUGH THE HOLE NEXT TO THE FENDER LIGHT HARNESS INTO THE ENGINE BAY NEXT TO THE BATTERY

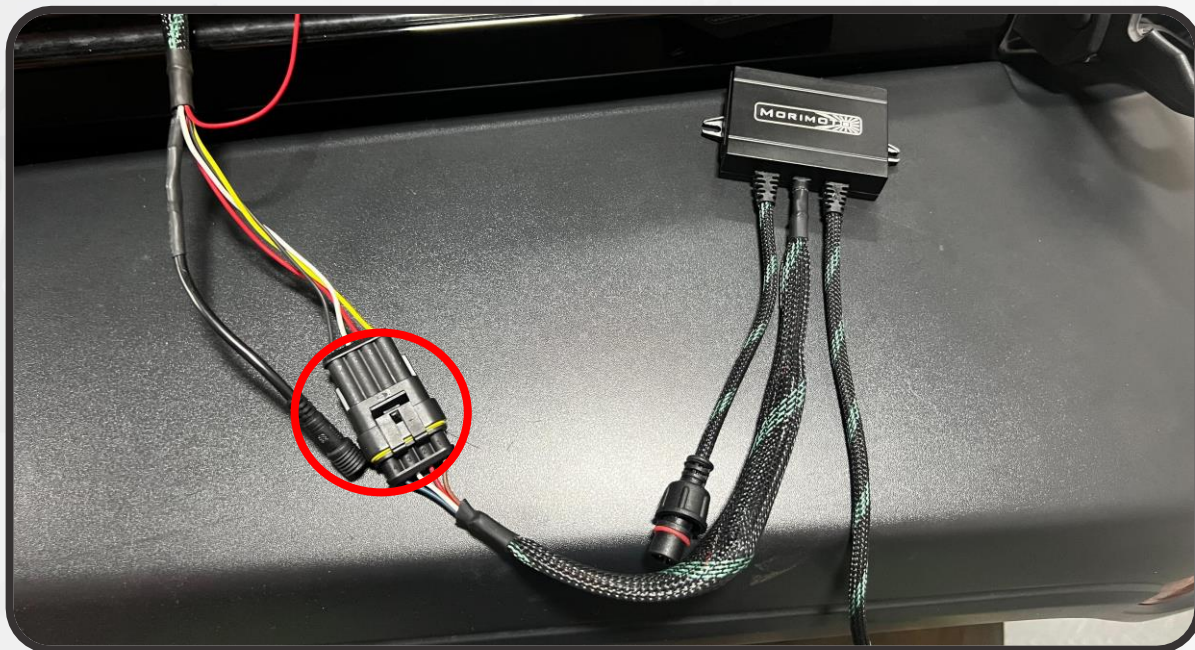


12. REINSTALL THE FENDER LINER

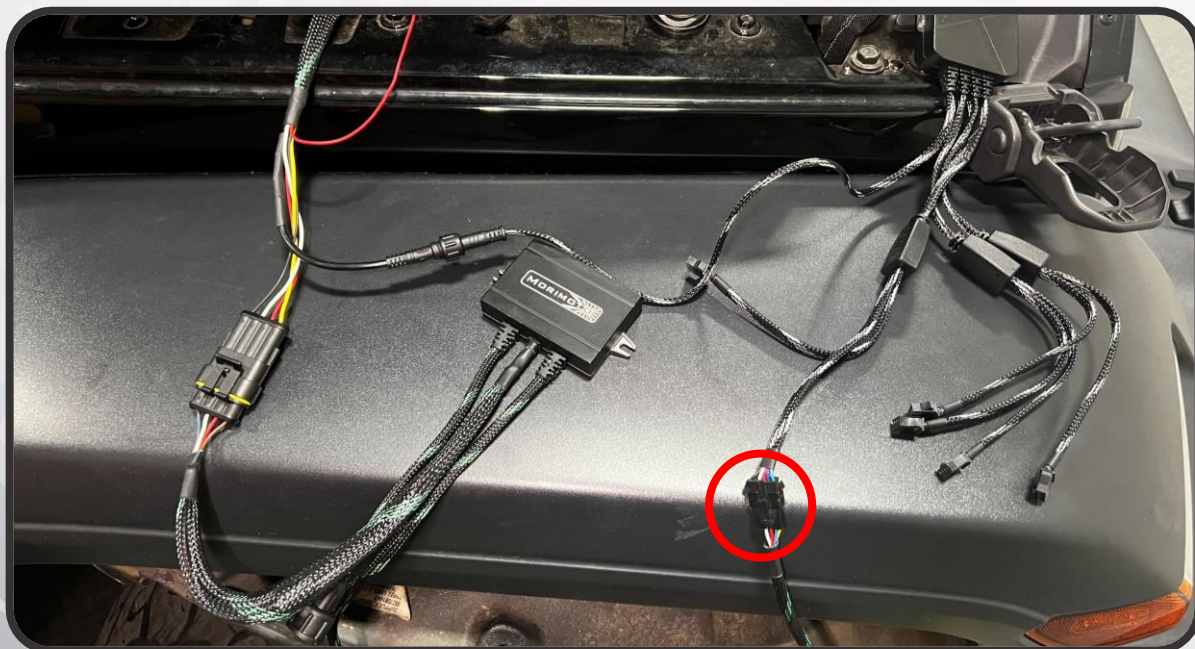


SUPER7 JL/JT HALO INSTALL GUIDE

13. CONNECT THE LARGE 4-PIN CONNECTOR ON THE LED DRIVER TO THE POWER HARNESS

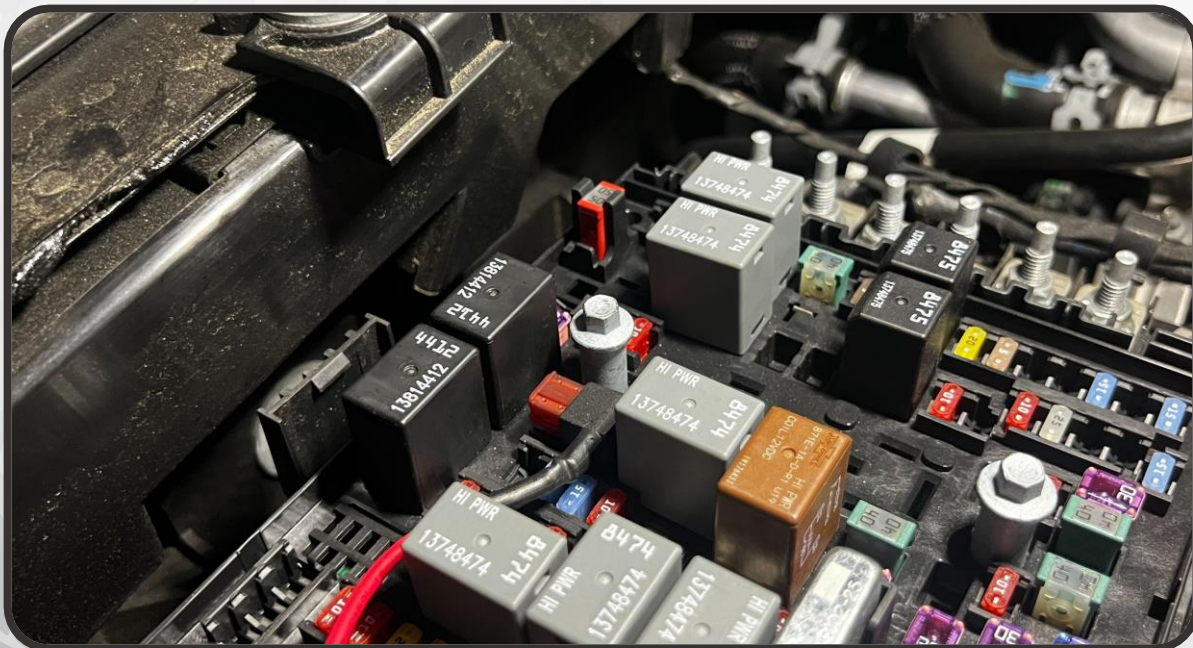


14. CONNECT THE SMALL 5-PIN OUTPUT CONNECTORS ON THE XBT BLUETOOTH CONTROLLER TO THE MATCHING CONNECTOR ON THE LED DRIVER



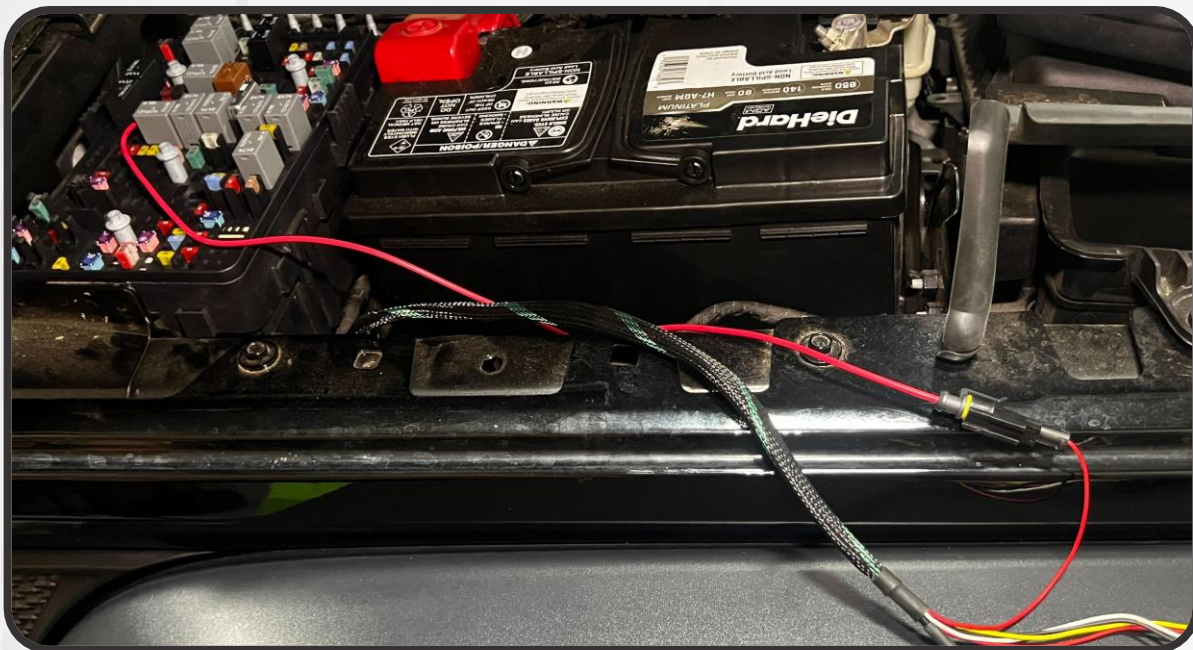
SUPER7 JL/JT HALO INSTALL GUIDE

15. REPEAT STEPS 8-14 ON THE DRIVER SIDE OF THE VEHICLE WITH THE POWER HARNESS THAT DOES NOT HAVE THE RED POWER INPUT WIRE. ROUTE THE WIRE TO THE XBT CONTROLLER ACROSS THE UPPER RADIATOR SUPPORT TO THE CONTROLLER
16. OPEN THE FUSE BOX AND LOCATE THE 10A FUSE IN FUSE SLOT #34. REMOVE THE FUSE AND INSTALL THE FUSE TAP HARNESS INTO THIS SLOT

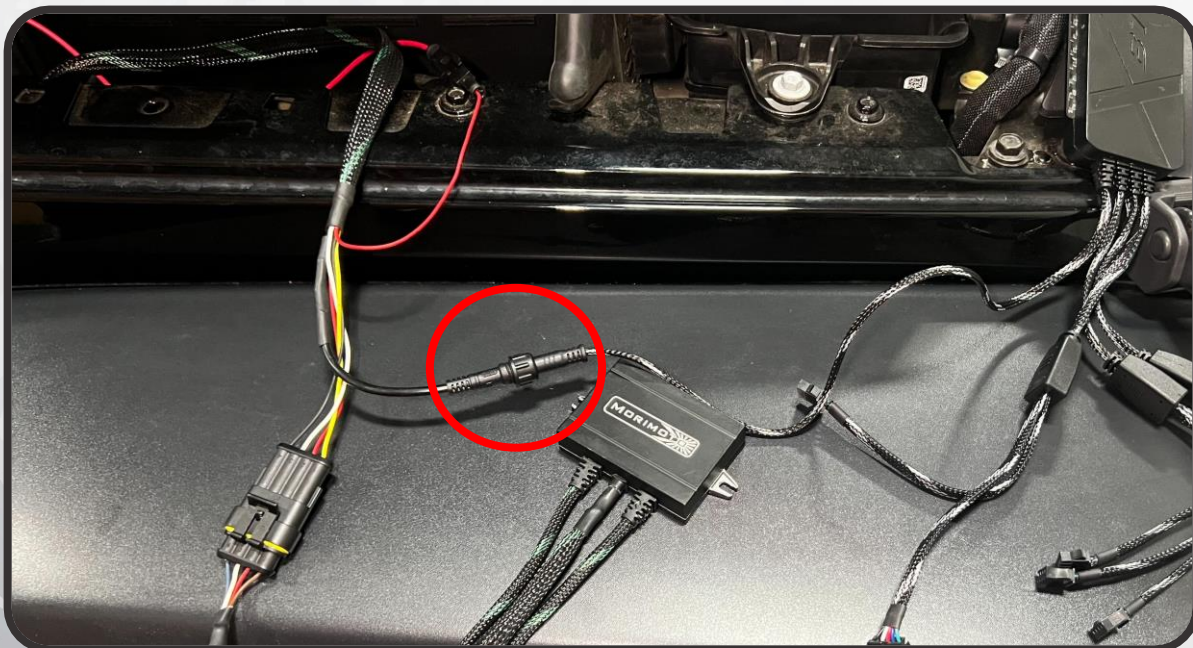


SUPER7 JL/JT HALO INSTALL GUIDE

17. ROUTE THE WIRE OUT OF THE FUSE BOX AND REPLACE THE FUSE BOX LID. CONNECT IT TO THE RED INPUT WIRE ON THE PASSENGER SIDE POWER HARNESS



18. CONNECT THE XBT CONTROLLER'S POWER INPUT BARREL CONNECTOR TO THE MATCHING CONNECTOR ON THE POWER HARNESS BY ALIGNING THE ARROWS ON THE CONNECTORS, PRESSING IT TOGETHER, AND TIGHTENING DOWN THE LOCKING COLLAR



SUPER7 JL/JT HALO INSTALL GUIDE

19. REMOVE THE FACTORY HEADLIGHTS AND INSTALL THE SUPER7 ASSEMBLIES ONTO THE VEHICLE. FOLLOW THE QR CODE BELOW FOR THE FULL GUIDE ON THE HEADLIGHT REMOVAL/SUPER7 ASSEMBLY INSTALLATION PROCESS



20. CONNECT THE LED DRIVER TO THE HALO ON EACH SIDE



SUPER7 JL/JT HALO INSTALL GUIDE

21. TURN ON THE VEHICLE AND CONFIRM THAT ALL FUNCTIONS ARE WORKING PROPERLY
22. TUCK ALL WIRES OUT OF THE WAY, AND SECURE THE LED DRIVERS, XBT CONTROLLER, AND WIRING IN A SUITABLE LOCATION IN THE ENGINE BAY



- ENJOY YOUR NEW MORIMOTO HALOS! -

